



Concentrate Mixing Manual

for a even better understanding on how to mix, watch the:

You **Tube** **Movie:**

<http://www.youtube.com/embed/G4LrWV9TF9Y>

SILCOAT-C or SILCOAT CONCENTRATE MANUAL

A 5:1 ratio mix- 5 parts water: 1 part SILCOAT-C.

Re-mixing at the destination is simply adding 20Litres of product to 100Litres of water and turning on a high-speed mixer for 10 minutes.

*Stainless Steel tank with a
.75Hp motor (1380 RPM)*



The product is immediately usable, however, a chemical reaction takes place within the following 12hours thickening it slightly.

During the mixing process, care should be taken not to introduce air into the product. When using a high-speed motor, often a vortex forms. Air is sucked down the vortex and creates bubbles, which can effect the application, especially in the case of the airless sprayers. This can be prevented by starting and stopping the motor for 5 seconds with 5 second intervals for the first 3-4 minutes till the product thickens up a bit.

A 200Litre stainless steel tank with a mounted .75Hp motor (1380 RPM) would be used in conjunction with a 15mm stainless steel shaft and a custom made stainless steel blade designed to reduce vortex possibilities to a minimum.

The next few pages is will explain step by step how to mix

SILCOAT-C

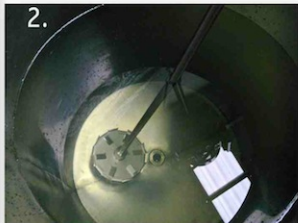
STEP 1:

Get the tank and containers ready, also make sure the mixing takes place in a clean and hygienic environment; make sure that your hands are washed or wear gloves and a hair cap.



STEP 2:

Ad 100L of water to the mixing tank or fill up to the indicated mark inside the tank. In some cases the water might have to be filtered first.



3.



STEP 3:

Break the seal of the 20L pale concentrate and remove the lid, the lid wont be able to be removed without breaking the seal first.

STEP 4:

Scoop one hand full of concentrate at a time from the 20L pale.

4.



STEP 5:

Add one scoop of concentrate at a time to the water in the mixer.

5.



STEP 6:
Make sure the
pale is
completely
empty; you
might need a
scraper for this.



STEP 7:
By now the inside of the tank should look like picture no.7.



STEP: 8

Start the mixing process. Turn motor 'ON' for about 5 seconds and 'OFF' for about 5 seconds, this **ON/OFF** sequence must be followed for the first 2-3 minutes until the product is a bit thicker. This will prevent a vortex from forming and stop air from being introduced to the product.



After 2-3 minutes of a 5 second ON/OFF sequences, the product should be thick enough to leave the motor on for about 5-6 minutes; however an eye should be kept on the mixing process so that the motor can be stopped if a vortex forms.

STEP: 9

After about 6 minutes, stop and check the product by dipping your finger in the mix, if white dots are visible in the product on your finger, you should start the motor for another 2-4 minutes.



STEP: 10

When the product is mixed properly it should have no white dots visible and should have a smooth white and creamy look and feel to it.





FINAL NOTE:

Now the product is ready to be topped off in 25L containers. Insert the container under the mixing tank; make sure the container's opening is lined up with the mixing tank's valve. Open the valve and fill containers as required, care should be taken not to overflow the containers; stopping about 50mm from the top should be adequate.

The product is immediately usable, however, a chemical reaction takes place within the following 12hours thickening it slightly.



Thank You.

Contact Information:

Email: nardus.bothma@silcoat.co.za

Cell: +27(0)78 938 6309